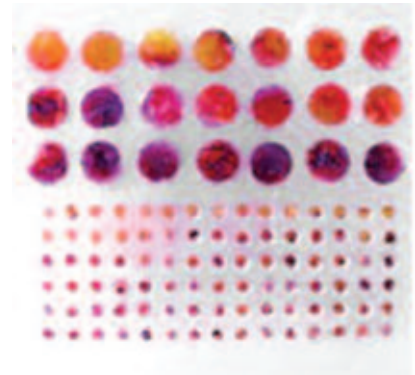


## Our tissue microarrays (TMAs) offer a high throughput approach to discovery of molecular targets and biomarkers

These RayBiotech products, distributed by SeraCare, can simultaneously analyze hundreds of tissue samples, and accommodate a wide range of histochemical, analytic techniques

### Product Features

- Ideal for use as
  - Immunohistochemical (IHC) stains for protein expression arrays
  - *In situ* hybridization (ISH) stains for DNA/RNA assays
- A single array detects hundreds of tissue samples
  - Entire cohorts can be analyzed in one assay, and using a small amount of reagent
- Enables the use of image acquisition methods such as processing and database integration
- Standard histological block can be cored as many as 100 times
  - The original block is not destroyed; available for return to donor
- Full range of technical support and testing services



Our tissue microarrays are developed with samples from multiple patients. Arrays are mounted on positively-charged glass and coated with paraffin to prevent oxidation and enzyme contamination

Developed by RayBiotech  
Distributed by SeraCare

### Typical Applications

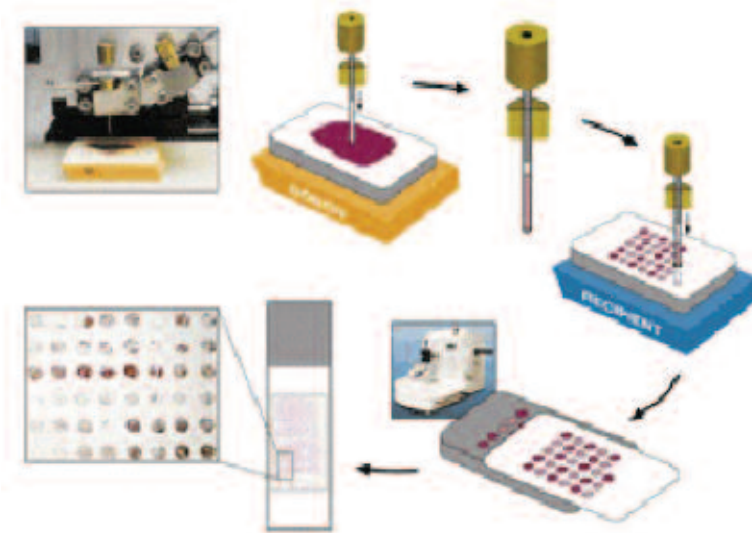
- Monitoring cancer markers
- Identifying molecular targets, biomarkers, and mechanisms of drug action
- Discovering expression patterns for molecular classification of disease

[Order Form](#)

### Related Products and Services

[Protein Arrays](#) | [Antibody Arrays](#) | [ELISA Kits](#) | [Custom Arrays](#) | [Testing Services](#)

## How Tissue MicroArrays Are Constructed



### Construction Criteria

Tissue microarrays (TMAs) include more than 90% of tissue core with each core at least 50% intact

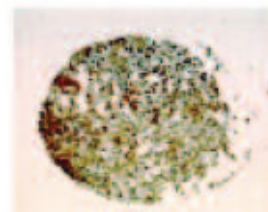
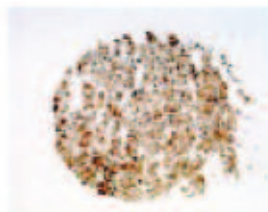
The position of each core is labeled by a letter and a number

**Format 1** – one TMA section per slide

**Format 2** – duplicate (2) mini-TMA sections per slide (antibody and negative control can be assayed in the same slide)

## Kit Content

- Tissue microarray slides (2) (shown right)
- 2x Blocking buffer for IHC tests
- 10x Wash buffer for IHC tests
- Data sheet



## Order Form

### Tissue MicroArrays (TMAs)

**Product Description.** Arrays are mounted on positively-charged glass, coated with a paraffin layer, and stored at -80° C

**Testing.** Verified to function by immunohistochemical testing

**Storage Requirement.** -20° C

**Shelf Life.** Recommended use within 12 months

Qty	TMA Product	Cores	Cat No <sup>2</sup>
<input type="checkbox"/>	Colorectal cancer 1	26	<a href="#">TMAH-CRC-01</a>
<input type="checkbox"/>	Colorectal cancer 2	72	<a href="#">TMAH-CRC-02</a>
<input type="checkbox"/>	Colorectal cancer 3	152	<a href="#">TMAH-CRC-03</a>
<input type="checkbox"/>	<a href="#">Breast cancer 1</a> <sup>1</sup>	25	<a href="#">TMAH-BRC-01</a>
<input type="checkbox"/>	<a href="#">Breast cancer 2</a> <sup>1</sup>	52	<a href="#">TMAH-BRC-02</a>
<input type="checkbox"/>	<a href="#">Breast cancer 3</a> <sup>1</sup>	79	<a href="#">TMAH-BRC-03</a>
<input type="checkbox"/>	Breast cancer 4	152	<a href="#">TMAH-BRC-04</a>
<input type="checkbox"/>	Lung cancer 1	50	<a href="#">TMAH-LC-01</a>
<input type="checkbox"/>	Female multi-type cancer	97	<a href="#">TMAH-FMTC-01</a>
<input type="checkbox"/>	Multi-type cancer	127	<a href="#">TMAH-MTC-01</a>
<input type="checkbox"/>	Multiple normal human	25	<a href="#">TMAH-MN-01</a>

### Custom Products and Testing Services

- Contact me about custom-built tissue microarrays, or microarrays built from my biopsy specimens
- Contact me about testing my samples in your lab
- Contact me about reagent purchase

1. Click TMA Product to view product image (breast cancer only)
2. Click specific Cat No to view Data Sheet

### Detail of My Specific Need

Use the box below to communicate additional information about your specific tissue microarray requirements

### My Preferred Next Contact

I am interested in (check all that apply)

- Immediate purchase     Pricing     Availability

I would like SeraCare to (check all that apply)

- Send information     Contact me     Send quotation

### My Contact Information

Name \_\_\_\_\_

Title \_\_\_\_\_ Phone \_\_\_\_\_

Organization \_\_\_\_\_

Street Address \_\_\_\_\_

City \_\_\_\_\_ State/Province \_\_\_\_\_

Country \_\_\_\_\_ Zip/Postal Code \_\_\_\_\_

Email \_\_\_\_\_

All fields required

[Copy to my email](#)

(Available for those with email resident on desktop)

**Submit**



For more information or to place an order, contact SeraCare customer service at 800.676.1881, or visit our eCatalog at [www.seracarecatalog.com](http://www.seracarecatalog.com)